



INTRALOCK INTERNAL IMPLANTS



INTRALOCK™ INTERNAL CONNECTION

The Perfection of the Morse Taper Interface

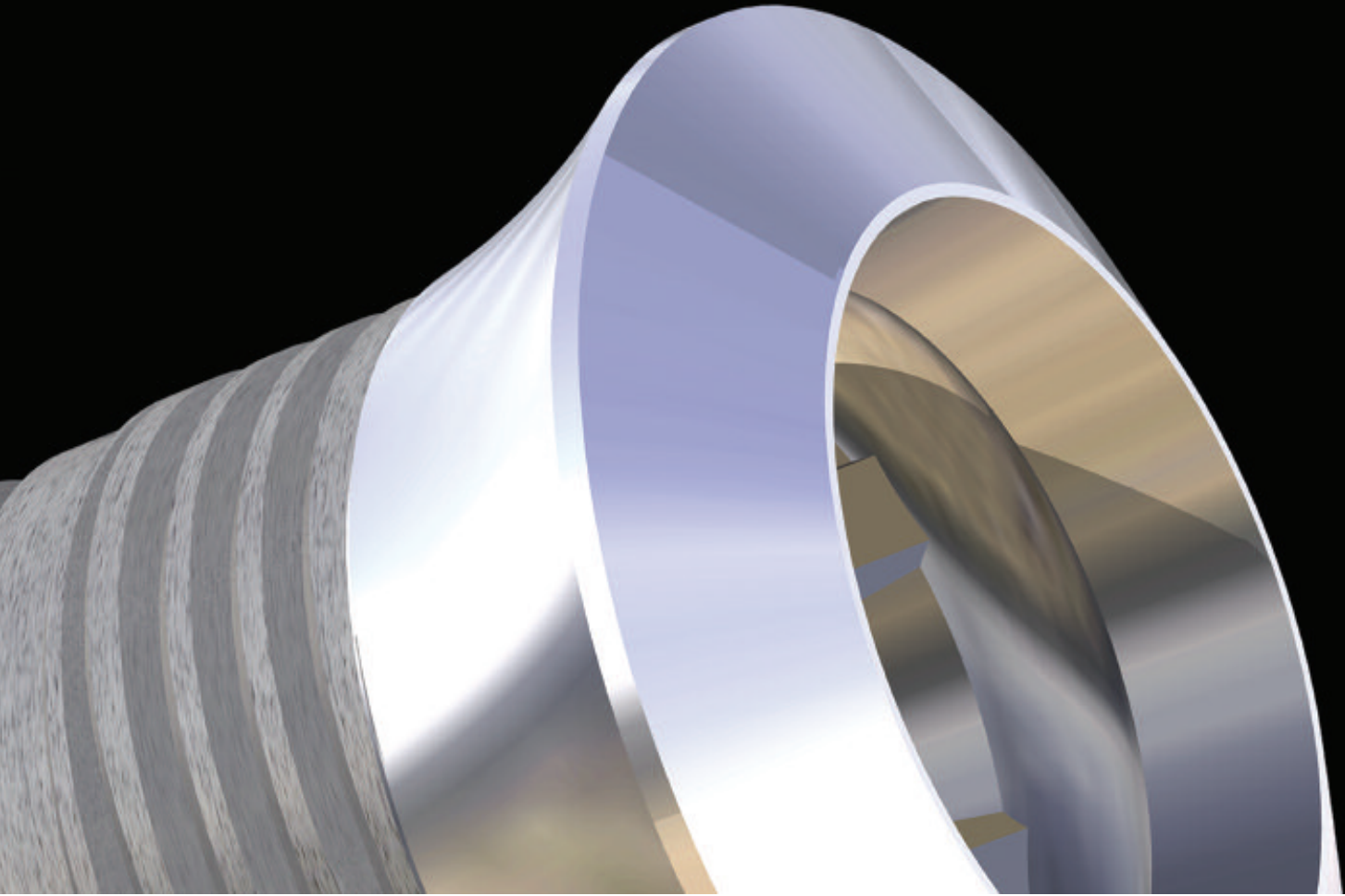
TABLE OF CONTENTS



<i>General Information</i>	2-3
<i>Indexing Capability</i>	4
<i>Multiple Implant Bodies</i>	5
• 3.3 Platform	
• 4.3 Platform	
• 5.5 Platform	
<i>Drive-Lock Delivery & Placement</i>	6
<i>Prosthetic Options</i>	7
• Flat Abutments - For Multiple Screw-Retained Prosthetics	
• One-Piece Abutments - For Cemented Prosthetics	
• Two-Piece Abutments - For Cemented Prosthetics	
• Ball Abutments for Overdentures	
<i>Flat Abutment Impression Procedure Techniques</i>	8-9
<i>Intralock™ 3.3 Platform Internal Implants and Components</i>	10-11
<i>Intralock™ 4.3 Platform Internal Implants and Components</i>	12-13
<i>Intralock™ 5.5 Platform Internal Implants and Components</i>	14-15
<i>One-Piece Abutment Impression Procedure</i>	16
<i>Screw-Retained Impression Procedure Techniques</i>	17
<i>Metal Transfer / Pick-Up Impression Procedure</i>	18
<i>3.3 Platform Flow Chart</i>	19
<i>4.3 and 5.5 Platform Flow Charts</i>	20

LOCK & LOAD!

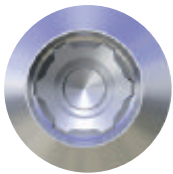
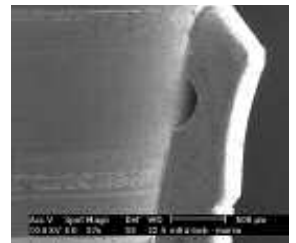
For Single-Stage Success



INTRALOCK™ INTERNAL CONNECTION

The Perfection of the Morse Taper Interface

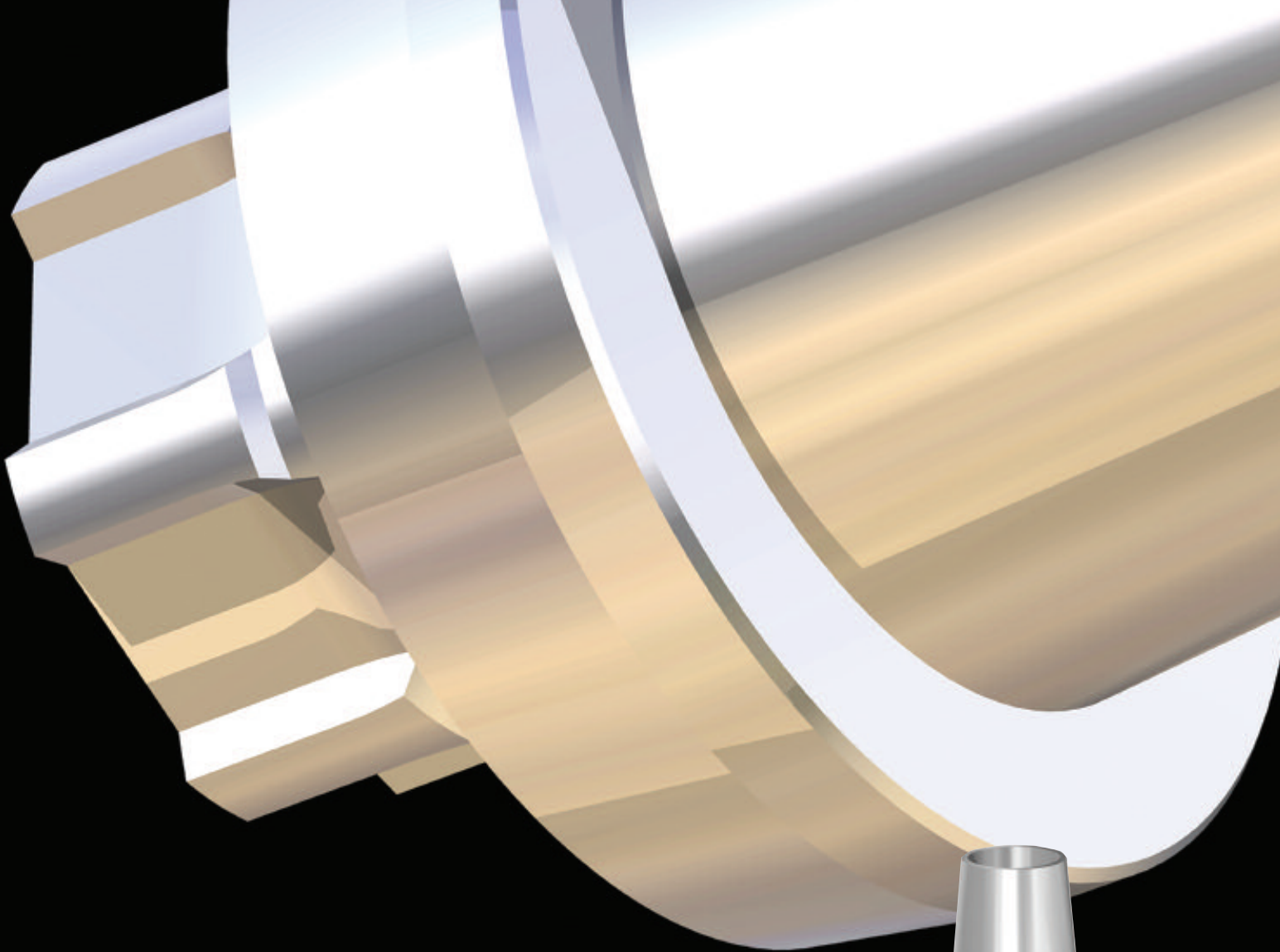
The mechanical advantage achieved when the **Morse Taper** is mated and tightened is similar to creating a “cold weld”, virtually eliminating loosening of the abutment. Incorporating this feature into an implant also lowers the center of gravity of the prosthetic connection significantly reducing rotational and lateral forces. Combine this internal interface with the **IN-DEX™** retentive registration system for screw-retained abutments and you are ready to... **LOCK & LOAD!**



LOCK & LOAD! The Intralock™ Internal Connection utilizing the clinically proven **Morse Taper connection** and the **IN-DEX™ RETENTIVE SYSTEM** provides a mechanical locking, friction fit that's completely stable. Eliminating micro-movement eliminates screw loosening. It's Supra-Crestal interface is ideal for one stage procedures.



LOCK & LOAD! For Indexing Capability
IN-DEX™ also provides a precise, reliable method for fabricating indirect restorations. Custom engineered for reproducible abutment positioning. It's the best of both worlds: **Morse Taper** AND the **IN-DEX™ RETENTIVE SYSTEM!**



***LOCK & LOAD!* For Clinical Versatility**

Multiple implant body configurations permit you to select the specific size and appropriate design of your implant based upon the clinical situations you encounter.



***LOCK & LOAD!* For Delivery and Placement**

Drive-Lock™ technology; from package to implant site without an implant mount! Fast... Easy... Dependable... A technological marvel! Once you take us for a test drive, you'll never switch again.



***LOCK & LOAD!* With a Wide Range of Prosthetic Options**

Cement-on one-piece, two-piece prepable, Plastic Castable and Gold Castable, screw retained, Flat Platform, O-Ball and Angle abutments are all accommodated.

INDEX™

Indexing Capability

In-Dex™ registration provides a method for an abutment to be transferred from an analog and replaced in the implant in the same position with extreme precision, guaranteeing the accuracy of the final restoration. When a prosthesis is fabricated directly on the abutment by the laboratory technician, all of his skills can be brought to bear with respect to margins, parallelism, contour, framework design, morphology and esthetics.

The **In-Dex™** feature, which guarantees reproducible abutment positioning, is a completely independent component of the implant. Machined separately, the Morse Taper is not compromised with respect to strength, form or function.

Full range of two-piece abutments available to provide a wide range of prosthetic options all featuring Index™ capabilities

Wide walls provide extra strength

4.3 Platform

5.5 Platform



INDEX™



INTERNAL MULTIPLE IMPLANT BODIES

Configurations for Your Clinical Preference

No need to compromise on length, shape or width of your implant selection. Three **Intralock™ Internal Connection** implant platforms, 3.3, 4.3 and 5.5, incorporate an assortment of implant body designs and lengths that address a wide range of clinical situations and preferences.



3.3 PLATFORM

The **3.3 Platform** was specifically developed for the **3.3mm diameter Intralock™ Implant** to provide enough structural strength to permit an internal connection that accepts a wide range of restorative options. The implant's small diameter enables access to implant sites with small interproximal dimension or narrow ridges. This platform has components that enable cement-on fixed restorations, screw-retained abutments as well as castable abutments. For a removable prosthesis, there is a selection of ball abutments that are available. It also features its own flat abutment system that permits fabrication of a full mouth rehabilitation or a cross arch splinting case. (see pages 10, 11 and 19)



I4011TI

I4011STI

IC4311STI

5.5 PLATFORM

Wide-body versatility is engineered in these four **Intralock™ 5.5 Platform Implant** configurations. From the 4.75mm Diameter Short Collar to the 5.0mm Diameter Conic, 2mm Collar a wide range of anatomic requirements are anticipated in the selection. The 5.0mm Platform features its own assortment of the same wide range of abutment options as the 4.3 Platform. A full choice of cement on, screw retained, ball and flat abutments complement the platform's implants restorative versatility. (see pages 14, 15 and 20)



I4713STI

IC4313TI

IC5013STI

IC5013TI

4.3 PLATFORM

This platform features **4.0mm diameter Straight Body Intralock™ Implants**, available in a 2mm Collar or a Short Collar design and a **4.3 mm diameter Short Collar Conic Implant**. The 4.3mm diameter Conic Implant is tapered to enhance initial stability. The 4.3 Platform accepts a full spectrum of One-Piece or Two Piece Abutments for cement-on prosthetics, Ball Abutments for overdentures, Flat Abutments for multiple screw-retained prosthetics ideal for bridges and bars. (see pages 12, 13 and 20)

DRIVE-LOCK™

Delivery and Placement

Drive-lock™ technology eliminates the need for an implant mount. It permits the clinician to pick up the implant directly from a sterile package and carry it to the osteotomy site. The **Drive-Lock™ Contra-Angle Attachment** can safely exert the force necessary for implant insertion without risk of deformation of the prosthetic interface connection. Implant placement is achieved with incomparable ease, precision and speed. Additionally, the tip of the **Drive-lock™** is a 1.3 mm hex driver, designed to carry the cover screw to the implant and threaded into place.

Contra-angle Drive-Lock Drivers are engineered with a hex configuration at the base of the shaft. This feature mates with the W & H™ latch-type contra-angle and reinforces the shaft, enabling high moments of force to be sustained.

**No
implant
mount
necessary!**



Contra Angle, Short
3.3 Platform: DLISCAS
4.3/5.5 Platform: IDLCAS



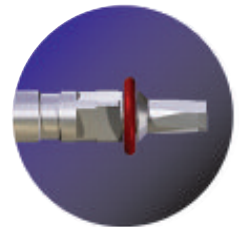
Contra Angle, Long
3.3 Platform: DLISCAL
4.3/5.5 Platform: IDLICAL



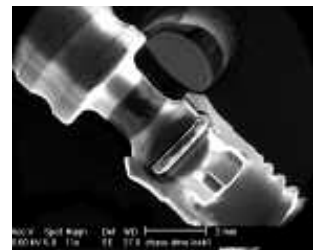
Ratchet Driver, Short
3.3 Platform: DLISRS
4.3/5.5 Platform: IDLRS



Ratchet Driver, Long
3.3 Platform: DLISRL
4.3/5.5 Platform: IDLRL



**The tip of all
Drive-Lock Drivers
is a 1.25mm (.50 in.)
that fits all
cover screws**



SEM Driver in implant

The tip of the Driver also fits the Cover Screw!

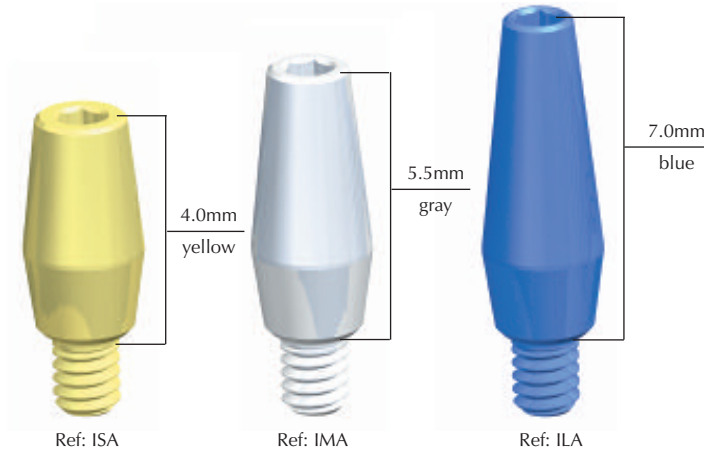
PROSTHETIC OPTIONS

Wide Range of Restorative Options



DELIVERY & PLACEMENT

Intra-Lock® Internal Connection System provides you and your laboratory technician with a broad spectrum of prosthetic options. Compromises are unnecessary to ensure clinical versatility when designing the optimum prosthesis. Intra-Lock features an abutment selection that includes straight, cement-on, angled, custom, two-piece prepreable, screw-retained and O-Ball overdenture abutments.



One-Piece Abutments - For cemented prosthetics

Used when implants are in optimal position for final prosthetics. Compatible with Straumann® and Lifecore® 4.6mm platform.

- Impression of the abutment can be taken intra-orally
- One analog for each abutment length
- Same 1.3mm driver for all Intra-Lock™ components
- 35 Ncm recommended pre-torque
- Fits both 4.3 and 5.5mm platforms

Two-Piece Abutments - For cemented prosthetics

Full selection of Two-Piece Abutments:
0°, 15°, 25° and Castable

- Designed for screw-retained crowns and bridges
- Indirect impression technique
- Same 1.3mm driver for all Intra-Lock™ implants
- 35 Ncm recommended pre-torque



Flat Abutments - For multiple screw-retained prosthetics

Permits fabrication of a full-mouth rehabilitation or a cross-arch splinting case indirectly.

- Effectively resolves challenges to parallelism problems
- Pick Up or Transfer technique can be utilized
- Indirect impression technique
- Ideal for bridges and bars

FLAT ONE



O-Ring and Metal Housing



Ball Abutments - For overdentures

- Suitable for overdenture restoration
- Analogs available for indirect fabrications
- Low profile metal housing for O-Ring



FLAT
ABUTMENT

FLAT ABUTMENT

Allows Placement of a Passive Super Structure Even in the Case of Divergent Implants

The **Intralock™ Flat Abutment** permits you to fabricate a full-mouth rehabilitation or cross-arch splinting case indirectly, with the ability to resolve challenges of parallelism.

FLAT ONE

Flat Abutment
3.3mm Platform



IS33FAI

Flat Abutment
4.3mm Platform



IFA

Flat Abutment
5.5mm Platform



IFAW

Flat Abutment Casting Cylinders



IFAPC



IFAGC



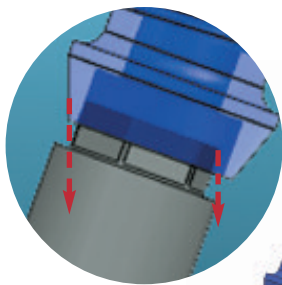
IFANPC



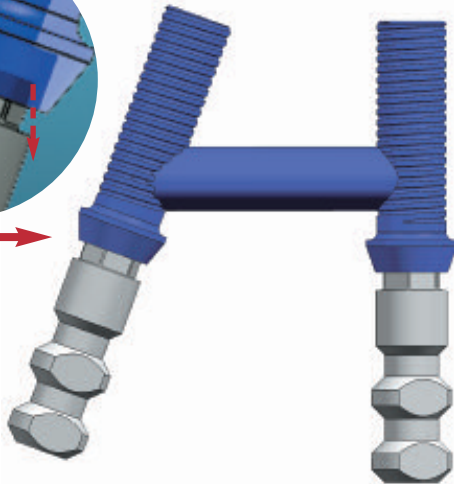
IFATC



IFANTC

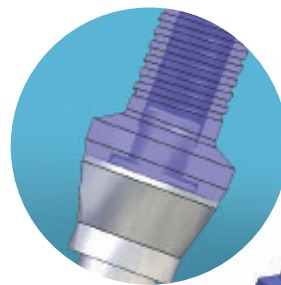


INTERFERENCE

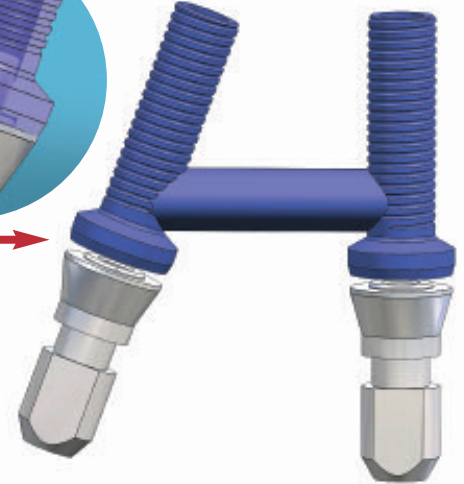


External Hex implant System

Path of insertion is difficult due to multiple angled implants in a bar fabrication.

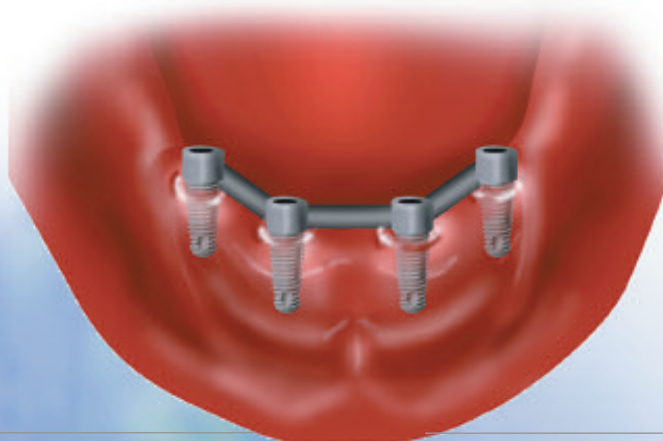


SEATS PASSIVELY



Flat Abutment

Internal connection combined with a Flat Abutment ensures accurate, passive seating.



FLAT ABUTMENT IMPRESSION TECHNIQUE

Flat Abutment for Screw-Retained Prosthesis



FLAT ABUTMENT

Flat Abutment Transfers



IFAT

IFANT

Retaining Screw



IFARS



IFALS

Long Impression Screw

Flat Abutment Analogs



IFAA

IFANA

Flat Abutment Cover Screw



IFACS

The same procedure applies to all three platforms:

1

35 Ncm of torque



Screw the Flat Abutment into place.



2



Retaining Screw holds Abutment Transfer in place. Long Screw for open tray technique. Short Screw for closed tray technique

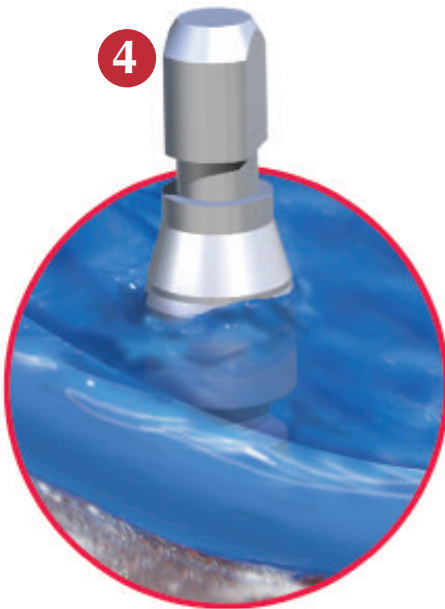


3



Flat Abutment Cover Screw in place.

4



Impression is taken on the Flat Abutment using Pick-Up or Transfer technique. The analog is attached to the Transfer in the impression, and the working model is poured.

5



The working model is poured. The Casting Cylinder, Plastic or Gold, is placed on the analog and the structure is "waxed up".



IS3313TI

3.3 PLATFORM

3.3 Internal Implant

C O M P O N E N T S A N D



Healing Abutments

Prosthetic Connection: Ø 3.3 mm Internal SQ
 Recommended Pre-torque: **10 Ncm**
 Dimensions (diameter x length):

	<i>Ref No.</i>
• 3.5 mm X 3 mm	ISHA3
• 3.5 mm X 4 mm	ISHA4
• 3.5 mm X 5 mm	ISHA5
• 3.5 mm X 3 mm	ISEPHA3
• 3.5 mm X 4 mm	ISEPHA4
• 3.5 mm X 5 mm	ISEPHA5

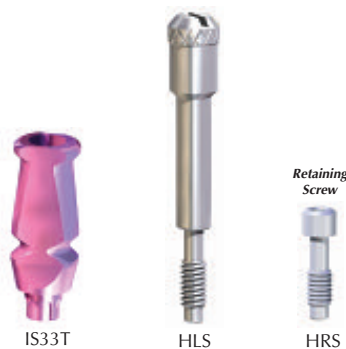


Abutments for Cemented Prosthetics

Prosthetic Connection: Ø 3.3 mm Internal SQ
 Recommended Pre-torque: **25 Ncm**

Includes Retention Screw

• One-piece abutment	IS33NHSA
• Two-piece abutment w/retention screw	IS33SA
• 15° Angled Abutment	IS33AA15
• Retaining Screw	HRS

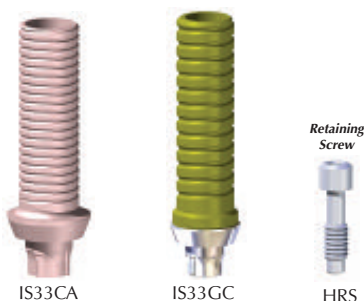


Prosthetic Transfer

Prosthetic Connection: Ø 3.3 mm Internal SQ
 Recommended Pre-torque: **10 Ncm**

Can be used for Transfer technique or Pick-up (w/ Long Screw Ref HLS)

• Transfer w/ Retention Screw	IS33T
• Long Impression Screw	HLS
• Retaining Screw	HRS



UCLA Type– Castable Cylinders and Gold Cylinders

Includes Retention Screw

Prosthetic Connection: Ø 3.3 mm Internal SQ.
 Recommended Pre-torque: **25 Ncm**

• Castable Abutment Indexed	IS33CA
• Gold Cylinder Indexed	IS33GC
• Retaining Screw	HRS

3.3 mm Straight Body

Short Collar, Diameter 3.3 mm, Blasted & Progressive Acid-etched

Length	8 mm	10 mm	11.5 mm	13 mm	15 mm
Ref. No.	IS3308TI	IS3310TI	IS3311TI	IS3313TI	IS3315TI

Note: Cover Screw is included

A N C I L L A R Y I T E M S

Screw-Retained Components

Ref No.

- Analog IS33LA



IS33LA

Ball Abutment

Prosthetic Connection: Ø 3.3 mm Internal SQ

O ball: Ø 2.5 mm .

Recommended Pre-torque: **30 Ncm**

(Uses our standard screwdriver hex 0.50")

- O-Ball Attachment 1 mm Collar ISBA1
- O-Ball Attachment 2 mm Collar ISBA2
- O-Ball Attachment 3 mm Collar ISBA3

Note.: Includes Metal Housings and Retentive Caps

- Standard Metal Housing for ø2.5mm Ball Abutments - (2 pcs) Uses Retention Caps MHN
- Pink Retention Cap for Standard Metal Housing (4pcs)..... NPCN



ISBA1

ISBA2

ISBA3



MHN

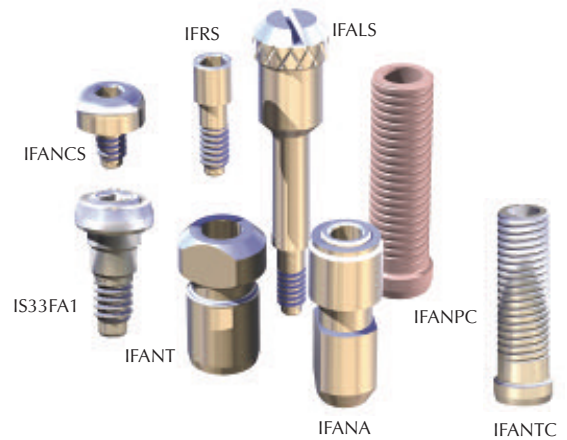


NPCN

Flat Abutment System

See details in Intralock line Catalog

- **NARROW** Flat Abutment 1mm high for 3.3 mm internal IS33FAN1
- **NARROW** Flat Abutment 2mm high for 3.3 mm internal IS33FAN2
- **NARROW** Flat Abutment 3mm high for 3.3 mm internal IS33FAN3
- **NARROW** Flat Abutment Transfer IFANT
- Retaining Screw IFARS
- Flat Abutment Long Screw IFALS
- **NARROW** Flat Abutment Analog IFANA
- **NARROW** Flat Abutment Castable Cylinder IFANPC
- **NARROW** Flat Abutment Cover Screw..... IFANCS
- **NARROW** Flat Abutment Titanium Cylinder with Retaining Screw IFANTC



Drive-Lock® for Intralock™ SQ 3.3mm Implants

- Drive-Lock®, Short for Contra Angle DLISCAS
- Drive-Lock®, Long for Contra Angle DLISCAL
- Drive-Lock®, Short for ratchet, square connection DLISRS
- Drive-Lock®, Long for ratchet, square connection DLISRL



Contra Angle, Short
DLISCAS



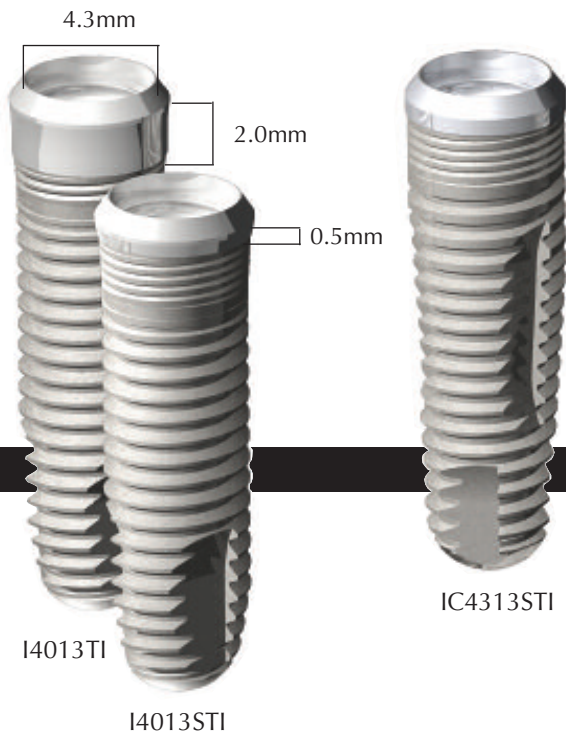
Contra Angle, Long
DLISCAL



Ratchet Driver, Short
DLISRS



Ratchet Driver, Long
DLISRL



4.3 PLATFORM

4.0mm, 4.0mm Short, and 4.3mm Conic Short

C O M P O N E N T S



Healing Abutments

Ref No.

- 3 mm high, 4.3 mm Platform IHA3
- 4 mm high, 4.3 mm Platform IHA4
- 5 mm high, 4.3 mm Platform IHA5
- 3 mm high, 4.3 mm Platform IHA3EP
- 4 mm high, 4.3 mm Platform IHA4EP
- 4 mm high, 4.3 mm Platform IHA5EP

Abutment Analogs (ø4.3 mm platform)
Color coded: yellow, gray and blue

Plastic Impression
Coping Caps
Single Use



IPIC
(4.3mm
Platform)



IAAS
Yellow:
Use with
4.0mm



IAAM
Gray:
Use with
5.5mm



IAAL
Blue:
Use with
7.0mm

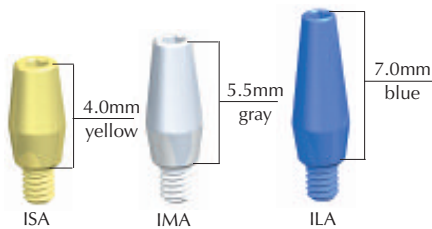


IIMA

One-Piece Restorative Components

Impression & Lab

- Plastic Impression Cap, ø4.3 mm 5 pieces (single use)..... IPIC
- Abutment Analog, 4.0 mm high, ø4.3 mm, yellow IAAS
- Abutment Analog, 5.5 mm high, ø4.3 mm, gray IAAM
- Abutment Analog, 7.0 mm high, ø4.3 mm, blue IAAL
- Implant Margin Analog (with tutor) IIMA



One-Piece Abutments - For Cemented Prosthetics

Used when implants are in optimal position for final prosthetics. Compatible with Straumann® and Lifecore® 4.6 mm platform and IntraLock™ 4.3 mm & 5.5 mm platform.

- Same 1.2mm driver for all Intra-Lock™ components
- 35 Ncm torque required
- 4.0 mm high, yellow ISA
- 5.5 mm high, gray IMA
- 7.0 mm high, blue ILA



Two-Piece Abutments - For Cemented Prosthetics

Full selection of Two-Piece Abutments: 0°, 15°, 25° and Castable.

- Same 1.25mm driver for all Intra-Lock™ components
- 30 Ncm torque required. Includes Retaining Screw
- Straight, 0°, 4.3 mm platform IAA0
- 15° Angled, 4.3 mm platform..... IAA15
- 25° Angled, 4.3 mm platform..... IAA25
- Castable for both platforms IPCA
- Castable (gold) for both platforms..... IGCA

4.3 PLATFORM - Straight Body

4.0 mm Diameter, 2 mm Collar, Straight Body, Blasted & Progressive Acid-etched

Length	8 mm	10 mm	11.5 mm	13 mm	15 mm
Ref. No.	I4008TI	I4010TI	I4011TI	I4013TI	I4015TI

4.0 mm Diameter, Short Collar, Straight Body, Blasted & Progressive Acid-etched

Length	8 mm	10 mm	11.5 mm	13 mm	15 mm
Ref. No.	I4008STI	I4010STI	I4011STI	I4013STI	I4015STI

Conic® Body

4.3 mm Diameter, Short Collar, Conic® Body, Blasted & Progressive Acid-etched

Length	10 mm	11.5 mm	13 mm	15 mm
Ref. No.	IC4310STI	IC4311STI	IC4313STI	IC4315STI

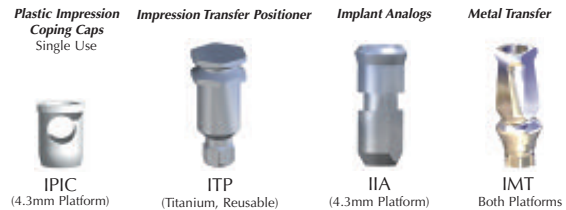
Note: Cover Screw is included

A N D A N C I L L A R Y I T E M S

Screw-Retained Components

Impression & Lab

- Impression Transfer Positioner (titanium, reusable) ITP
- One-Piece Plastic Impression Cap, 4.3 mm 5 pieces (single use) IPIC
- Metal Transfer (with short screw) Both Platforms IMT
- Implant Analog, 4.3 mm, platform IIA
- Long Impression Screw HLS



Ball Abutments for Overdentures

Ideal for tissue supported overdenture restoration - includes O-Ring Housing in both platforms

- Ball Abutment 1mm IBA1
- Ball Abutment 2mm IBA2
- Ball Abutment 3mm IBA3
- Ball Abutment 4mm IBA4
- Metal Housing and O-Ring BORH
- O-Ring refill (10 pieces) ORR
- Ball Abutment Analog (not shown) OBA

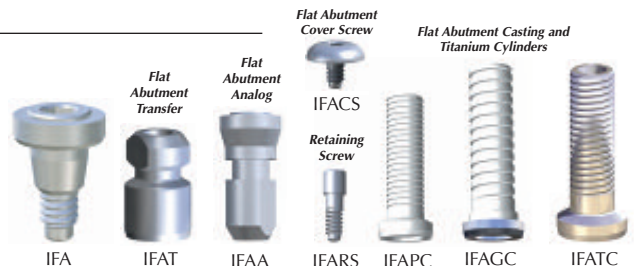
Ball Abutments for Overdentures



Flat Abutments - For Multi-Unit Screw-Retained Prosthetics

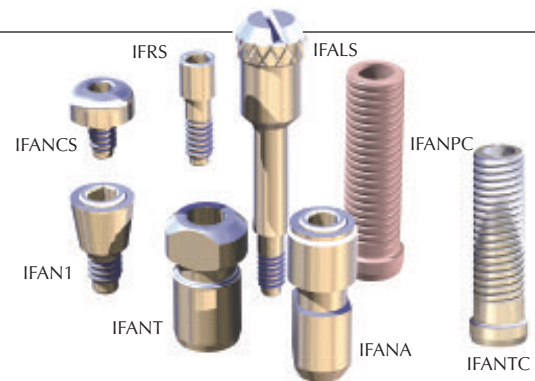
Permits fabrication of a full-mouth rehabilitation or a cross-arch splinting case indirectly. Ideal for bridges and bars.

- Flat Abutment, 4.3 mm platform 1mm High IFA1
- Flat Abutment, 4.3 mm platform 2mm High IFA2
- Flat Abutment Titanium Cylinder with Retaining Screw IFATC
- NARROW Flat Abutment, for both platforms 1mm High..... IFAN1
- NARROW Flat Abutment, for both platforms 2mm High IFAN2



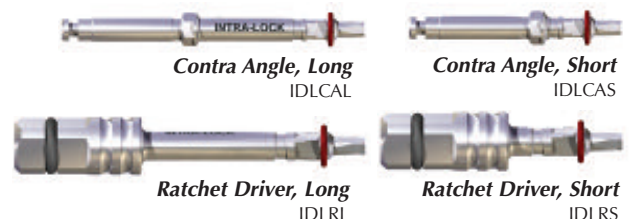
Flat Abutment Components (For both Platforms)

- Long Impression Screw IFALS
- Flat Abutment Transfer with Retaining Screw IFAT
- Flat Abutment Analog IFAA
- Flat Abutment Cover Screw IFACS
- Retaining Screw IFARS
- Flat Abutment Casting Cylinder with Retaining Screw IFAPC
- Flat Abutment Casting Cylinder (gold) with Retaining Screw IFAGC
- NARROW Flat Abutment Transfer IFANT
- NARROW Flat Abutment Analog IFANA
- NARROW Flat Abutment Castable Cylinder IFANPC
- NARROW Flat Abutment Cover Screw IFANCS
- NARROW Flat Abutment Titanium Cylinder with Retaining Screw IFANTC



Drive-Lock® for Intralock™ Connection Implants

- Drive-Lock®, Short for Contra Angle IDLCAS
- Drive-Lock®, Long for Contra Angle IDLCAL
- Drive-Lock®, Short for ratchet, square connection (4x4 mm)..... IDLRS
- Drive-Lock®, Long for ratchet, square connection (4x4 mm)..... IDLRL





5.5 PLATFORM

4.3mm Conic, 4.75mm Short, 5.0mm Conic and 5.0mm Conic Short Internal Implants

Note: Cover Screw is included

C O M P O N E N T S

IC5013TI

IC4313TI

I4713STI

IC5013STI



Healing Abutments

Ref No.

- 3 mm high, 5.5 mm platform..... IHA3W
- 4 mm high, 5.5 mm platform..... IHA4W
- 5 mm high, 5.5 mm platform..... IHA5W
- 3 mm high, 5.5 mm platform..... IHA3WEP
- 4 mm high, 5.5 mm platform..... IHA4WEP
- 5 mm high, 5.5 mm platform..... IHA5WEP

Abutment Analogs (ø5.5 mm platform)

Color coded: yellow, gray and blue

Plastic Impression Coping Caps
Single Use



IPICW
(5.5mm Platform)



IAASW
Yellow:
Use with
4.0mm
Abutment



IAAMW
Gray:
Use with
5.5mm
Abutment



IAALW
Blue:
Use with
7.0mm
Abutment



Implant Margin Analog

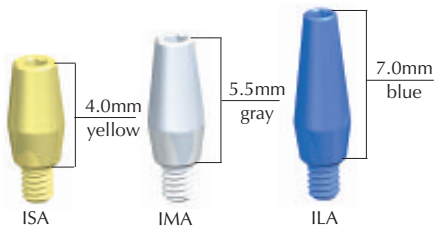


IIMAW

One-Piece Restorative Components

Impression & Lab

- Plastic Impression Cap, ø5.5 mm, 5 pieces (single use)..... IPICW
- Abutment Analog, 4.0 mm high, ø5.5 mm, yellow..... IAASW
- Abutment Analog, 5.5 mm high, ø5.5 mm, gray..... IAAMW
- Implant Margin Analog, Wide (with tutor)..... IIMAW



One-Piece Abutments - For Cemented Prosthetics

Used when implants are in optimal position for final prosthetics. Compatible with Straumann® and Lifecore® 4.6 mm platform and IntraLock™ 4.3 mm & 5.5 mm platform.

- Same 1.2mm driver for all Intra-Lock™ components
- 35 Ncm torque required
- 4.0 mm high, yellow..... ISA
- 5.5 mm high, gray..... IMA
- 7.0 mm high, blue..... ILA

Retaining Screw

Castable Abutments



Two-Piece Abutments - For Cemented Prosthetics

Full selection of Two-Piece Abutments: 0°, 15°, 25° and Castable.

- Same 1.25mm driver for all Intra-Lock™ components
- 30 Ncm torque required
- Includes Retaining Screw..... IFARS
- Standard, 0°, for 5.5 mm platform..... IAA0W
- 15° Angled, for 5.5 mm platform..... IAA15W
- 25° Angled, for 5.5 mm platform..... IAA25W
- Castable for both platforms..... IPCA
- Castable (gold) for both platforms..... IGCA

5.5 PLATFORM - Straight Body

4.75 mm Diameter, Short Collar, Straight Body, Blasted & Progressive Acid-etched

Length	8 mm	10 mm	11.5 mm	13 mm
Ref. No.	I4708STI	I4710STI	I4711STI	I4713STI

5.5 PLATFORM - Conic®

4.3 mm Diameter, Conic® Body, 2 mm Collar, Blasted & Progressive Acid-etched

Length	10 mm	11.5 mm	13 mm	15 mm
Ref. No.	IC4310TI	IC4311TI	IC4313TI	IC4315TI

5.0 mm Diameter, 2 mm Collar, Conic® Body, Blasted & Progressive Acid-etched

Length	11.5 mm	13 mm	15 mm
Ref. No.	IC5011TI	IC5013TI	IC5015TI

5.0 mm Diameter, Short Collar, Conic® Body, Blasted & Progressive Acid-etched

Length	11.5 mm	13 mm	15 mm
Ref. No.	IC5011STI	IC5013STI	IC5015STI

Note: Cover Screw is included

A N D A N G I L L A R Y I T E M S

Screw-Retained Components

Impression & Lab

- One-Piece Plastic Impression Cap, 5.5 mm (single use) IPICW
- Impression Transfer Positioner (titanium, reusable) ITP
- Metal Transfer (with short screw) Both Platforms IMT
- Implant Analog, 5.5 mm, platform IIAW
- Long Impression Screw HLS

Ref No.

Plastic Impression Coping Caps Single Use



IPICW (5.5mm Platform)

Impression Transfer Positioner



ITP (Titanium, Reusable)

Implant Analogs



IIAW (5.5mm Platform)

Metal Transfer



IMT Both Platforms



HLS

Ball Abutments for Overdentures

Ideal for tissue supported overdenture restoration - includes O-Ring Housing in both platforms

- Ball Abutment 1 mm IBA1
- Ball Abutment 2 mm IBA2
- Ball Abutment 3 mm IBA3
- Ball Abutment 4 mm IBA4
- O-Ring and Metal Housing BORH
- O-Ring refill (10 pieces) ORR
- Ball Abutment Analog (not shown) OBA

Ball Abutments for Overdentures

O-Ring and Metal Housing



BORH



IBA1

IBA2

IBA3

Flat Abutments - For Multiple Screw-Retained Prosthetics

Permits fabrication of a full-mouth rehabilitation or a cross-arch splinting case indirectly. Ideal for bridges and bars.

- Flat Abutment, 5.5 mm platform 1 mm High IFAW1
- Flat Abutment, 5.5 mm platform 2 mm High IFAW2
- Flat Abutment Titanium Cylinder with Retaining Screw IFATC
- **NARROW** Flat Abutment, for both platforms 1mm High IFAN1
- **NARROW** Flat Abutment, for both platforms 2mm High IFAN2

Flat Abutment Cover Screw



IFACS

Flat Abutment Casting and Titanium Cylinders



IFAPC



IFAGC



IFATC

Flat Abutment Transfer



IFAW



IFAT

Flat Abutment Analog



IFAA

Retaining Screw



IFARS

Flat Abutment Components (For both Platforms)

- Long Impression Screw IFALS
- Flat Abutment Transfer with Retaining Screw IFAT
- Flat Abutment Analog IFAA
- Flat Abutment Cover Screw IFACS
- Retaining Screw IFARS
- Flat Abutment Casting Cylinder with Retaining Screw IFAPC
- Flat Abutment Gold Cylinder with Retaining Screw IFAGC
- **NARROW** Flat Abutment Transfer IFANT
- **NARROW** Flat Abutment Analog IFANA
- **NARROW** Flat Abutment Castable Cylinder IFANPC
- **NARROW** Flat Abutment Cover Screw IFANCS
- **NARROW** Flat Abutment Titanium Cylinder with Retaining Screw IFANTC

IFRS



IFRS

IFALS



IFALS

IFANCS



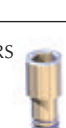
IFANCS



IFAN1



IFANT



IFANA



IFANPC



IFANA

IFANPC



IFANPC



IFANTC

Drive-Lock® for Intralock™ Connection Implants

- Drive-Lock®, Short for Contra Angle IDLCAS
- Drive-Lock®, Long for Contra Angle IDLCAL
- Drive-Lock®, Short for ratchet, square connection IDLRS
- Drive-Lock®, Long for ratchet, square connection IDLRL



Contra Angle, Long IDLCAL



Contra Angle, Short IDLCAS



Ratchet Driver, Long IDLRL



Ratchet Driver, Short IDLRS





IMPRESSION
TECHNIQUE

ONE-PIECE ABUTMENT IMPRESSION PROCEDURE

Abutment Analogs

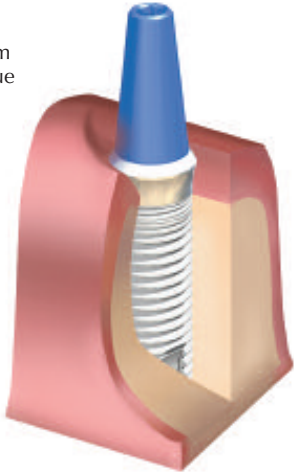
Color coded: Use yellow with 4.0mm, gray with 5.5mm and blue with 7.0mm



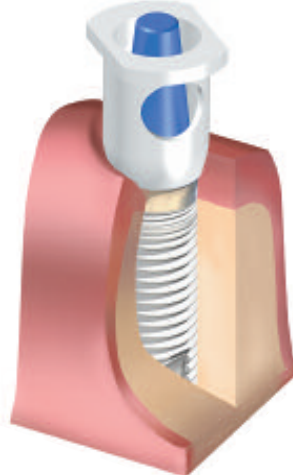
Option 1: Non-modified abutment

- 1** Select the correct One-Piece Abutment: 4.0mm, 5.5mm or 7.0mm and screw into place.

35 Ncm of torque



- 2** Snap Plastic Impression Coping Caps over implant margins.



- 3**



SNAP!

The assembly is now ready for Impression. **(3)** Syringe impression around the abutment and place stock tray over the IPIC.

- 5**



Titanium analog in master model

- 4**



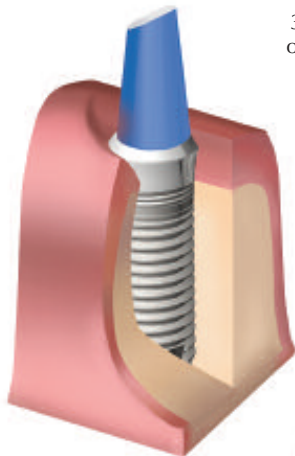
Select the matching abutment analog (color coded) and snap on the Plastic Impression Coping Caps captured in the impression tray.

Pour the impression to generate the working model.

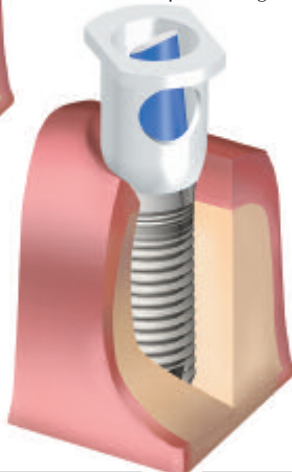
Option 2: Modified Abutment

- 1** In some cases, the abutment has to be prepped for occlusal clearance or parallelism.

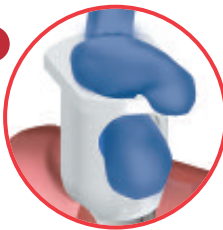
35 Ncm of torque



- 2** Snap Plastic Impression Coping Caps over implant margins.



- 3**



SNAP!

The assembly is now ready for Impression. **(3)** Syringe impression around the abutment and place stock tray over the IPIC.

- 4**



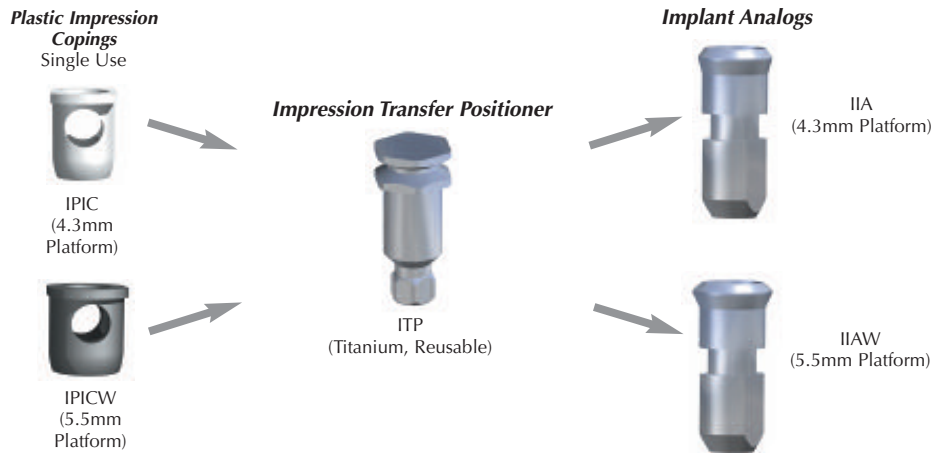
Select the matching margin analog (color coded) and snap onto the Plastic Impression Coping Caps captured in the impression tray.

- 5**

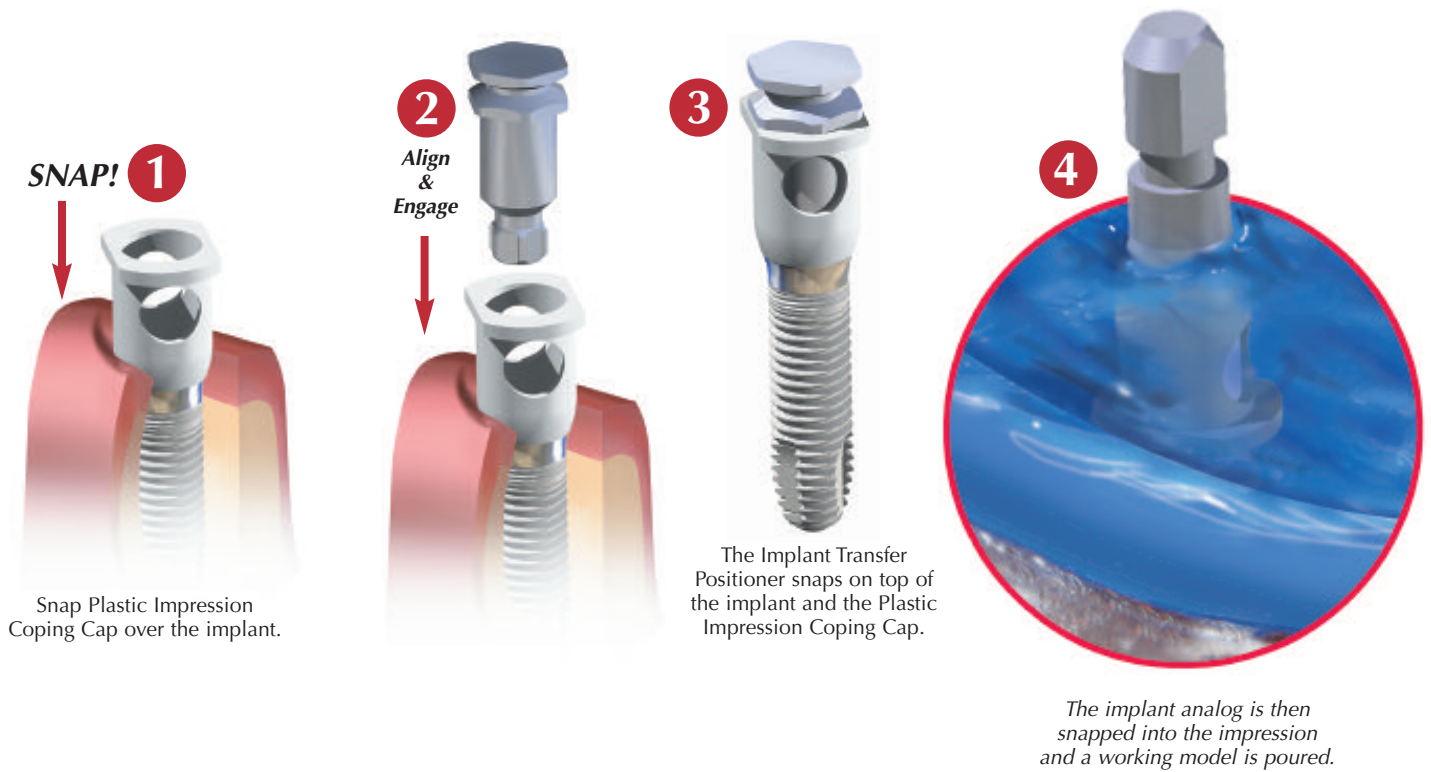


Pour the impression to generate the working model. If necessary, reinforce the cast with the tutor once the area with abutment is poured, and continue pouring the rest of the tray.

SCREW-RETAINED ABUTMENT IMPRESSION PROCEDURE

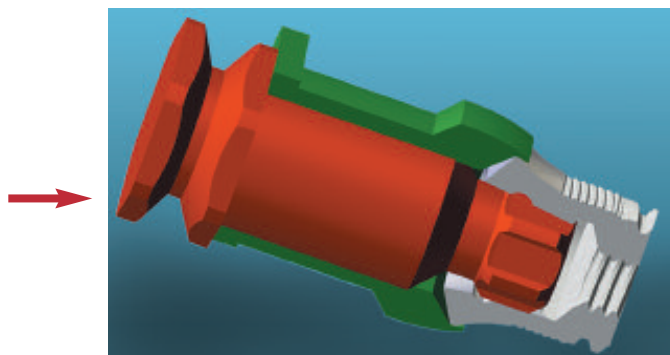


Procedure Accommodates 2-Piece Abutments

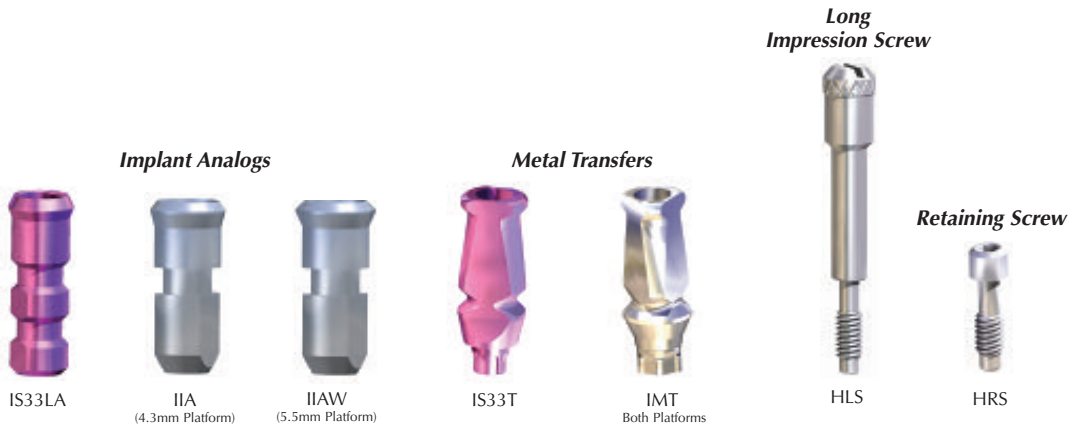


The assembly is ready for Impression.
Use silicone or polyester impression material.

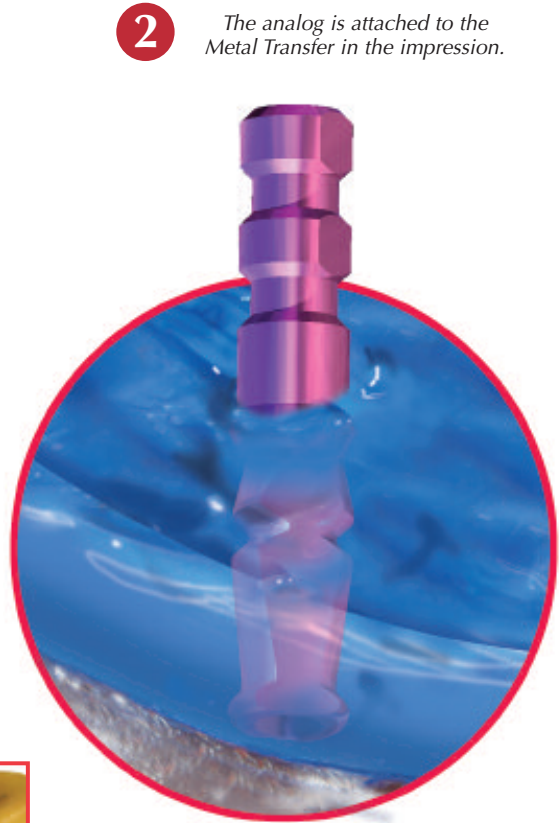
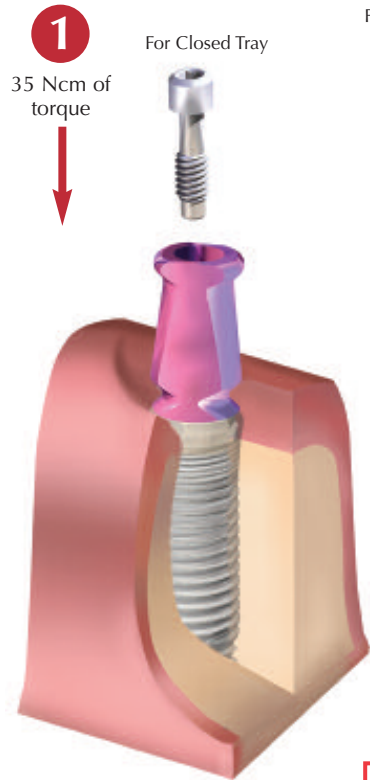
Both components are correctly positioned when the two parts mate intimately.



METAL TRANSFER / PICK-UP IMPRESSION PROCEDURE



Procedure Accommodates 2-Piece Abutments

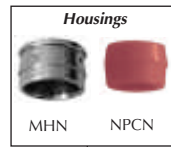


Pour the impression to generate the working model.

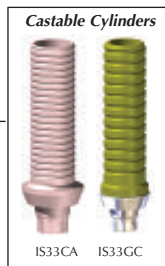
Cemented Prostheses on One-Piece Abutments



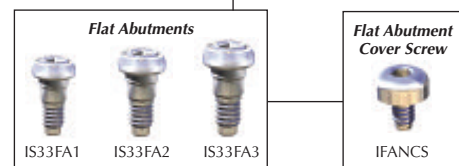
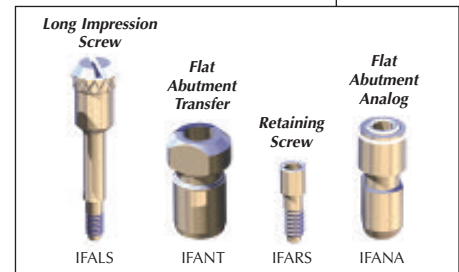
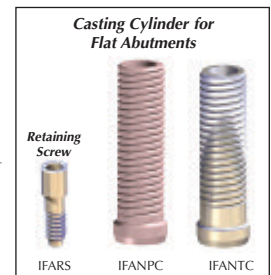
O-Ball Abutments



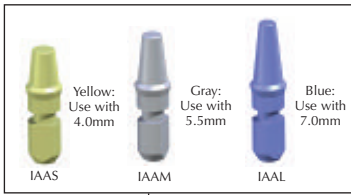
Cemented Prostheses on Two-Piece Abutments



Flat Abutments



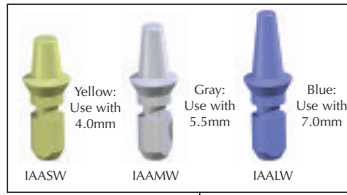
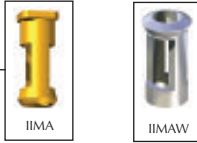
4.3 AND 5.5 PLATFORMS



Cemented Prosthesis on One-Piece Abutments

Implant Analogs (ø4.3 mm platform)
Color coded: yellow, gray and blue

Implant Margin Analog

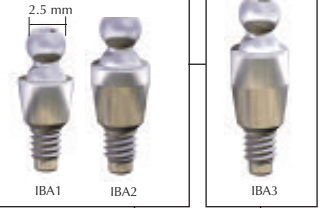


O-Ball Abutments

O-Ring and Metal Housing



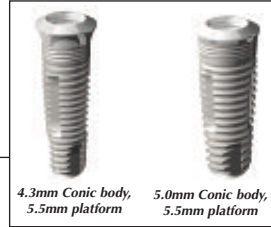
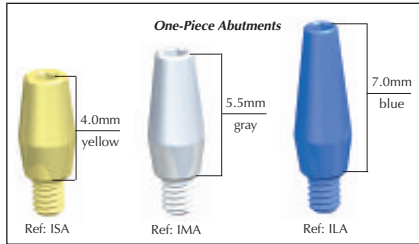
Ball Abutments for Overdentures



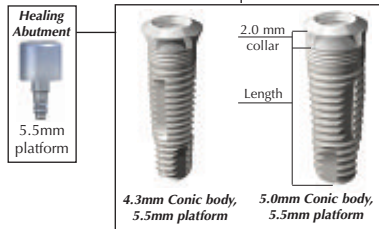
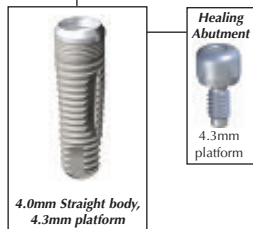
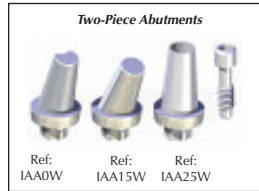
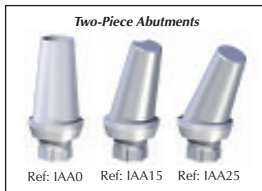
Plastic Impression Coping Caps



Plastic Impression Coping Caps

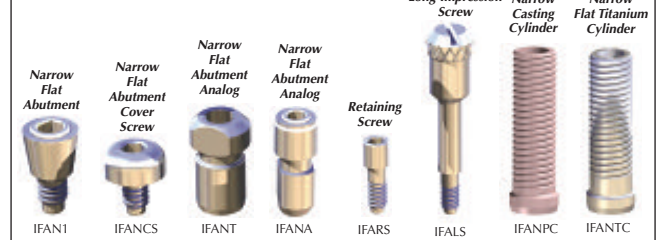


Cemented Prosthesis on Two-Piece Abutments



Flat Abutments

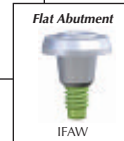
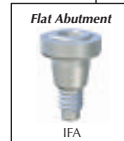
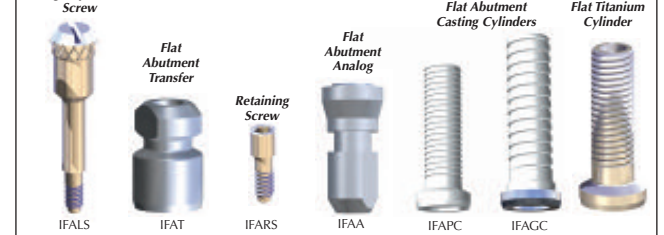
Components for Both Platforms

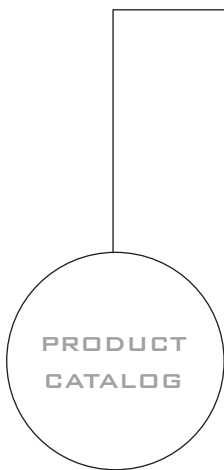


Long Impression Screw



Components for Both Platforms





INTRA-LOCK®
S Y S T E M
I N T E R N A T I O N A L

GLOBAL HEADQUARTERS
1200 N. Federal Highway
Suite 209
Boca Raton, Florida 33432 USA

Telephone: +1 561 447 8282
Fax: +1 561 447 8283
www.intra-lock.com • info@intra-lock.com